



the destination for your next event

elegant



Our 1920's building is on the National Register of Historic Places. We are a Seattle tradition offering full-service banquets for a variety of events – from intimate luncheons for 8 to auction dinners for 220, or a wedding for up to 400. Our experienced, professional staff provides the finest in service and cuisine guaranteed to exceed your expectations.



historic

memories last for a lifetime



private events

For large or small meetings, luncheons, dinner receptions or other private events, Seattle Yacht Club provides an exceptional variety of rooms, all with comfortable seating and inviting décor. A casual reception, company picnic, or formal dinner can be accommodated in our gracious setting.

We offer an extensive menu selection created by our noted Executive Chef and a prestigious wine list compiled by our Sommelier. Our exceptional food will make your event a memorable one.

Flexibility. For business and social events, various table configurations are available to suit the needs of your event. There is no charge for podiums, microphones or platforms. Other equipment can be rented for a reasonable fee. The Club's maintenance staff is on hand to assist you with your audio-visual needs.

Convenient. Located on Portage Bay between Lake Union and Lake Washington, Seattle Yacht Club is minutes away from downtown Seattle and the Eastside. We offer easy access from I-5 and SR 520, with plenty of free parking.

Our experienced, professional staff can be counted on to provide the outstanding service and amenities necessary to create a successful meeting or private function.



receptions / weddings

What better location for one of life's most important events than the historic setting of Seattle Yacht Club. The clubhouse, designed by world-famous architect John Graham Sr. and listed on the National Historic Registry, offers a variety of both indoor and outdoor settings for your ceremony, reception, photography and dramatic arrival.

Whether planning a wedding for 40 or 400, your wedding can reflect your style—from casual to elegant, intimate to elaborate—the beautiful clubhouse and grounds offer the perfect setting.

In warmer months, the bride may choose to arrive via festooned boat to a beautiful ceremony overlooking Portage Bay or under our tents. Then enjoy hors d'oeuvres passed on the lawn, dinner under the stars, and dancing on our oversized hardwood floor in the Fireside Lounge.

In the winter, an intimate ceremony in front of the fireplace will begin your perfect evening. Our grand piano is nearby for your music to welcome your guests.

Customize the bar to your specific desires, select from our list of excellent wines from Washington State and around the world, and consult with our Executive Chef to plan the perfect menu for your dream reception.

We want your wedding day to be worry-free and uniquely yours. Our excellent professional staff will provide outstanding service and amenities to help you create special memories to last a lifetime.





holidays

Holiday parties are spectacular at Seattle Yacht Club. All of our rooms are decorated for the season by a world-class designer. Your guests can warm themselves in front of our fireplaces or dance the night away overlooking the festively decorated boats on our docks. Start a new tradition at a classic Seattle location.



meeting facilities



Chart Room

Our most intimate room, the Chart Room features comfortable chairs around our beautifully refinished antique teak table. It is suitable for a small board meeting, a cozy lunch or dinner.



Heritage Room

With over 110 years of history to celebrate, the Heritage Room on our ground floor features beautiful teak display cases with Seattle boating memorabilia. Perfect for a business meeting, family dinner, cocktail party or business lunch. Lush red carpet and oversized fireplace provide warmth and intimacy for your event.



Commodore's Room

Located on our top floor, the Commodore's Room provides the perfect location for a business meeting, intimate dinner or casual lunch.



Fireside Lounge

Our largest room, the Fireside Lounge features high ceilings, a dramatic fireplace, a breathtaking view of our lawn and docks, and a covered patio available for year round use. The hardwood dance floor is covered by our fine English carpeting when not in use. This versatile room can be the center of a memorable wedding, business luncheon, reunion or holiday party, and can be used in conjunction with the Ward Room for a larger event.



Ward Room

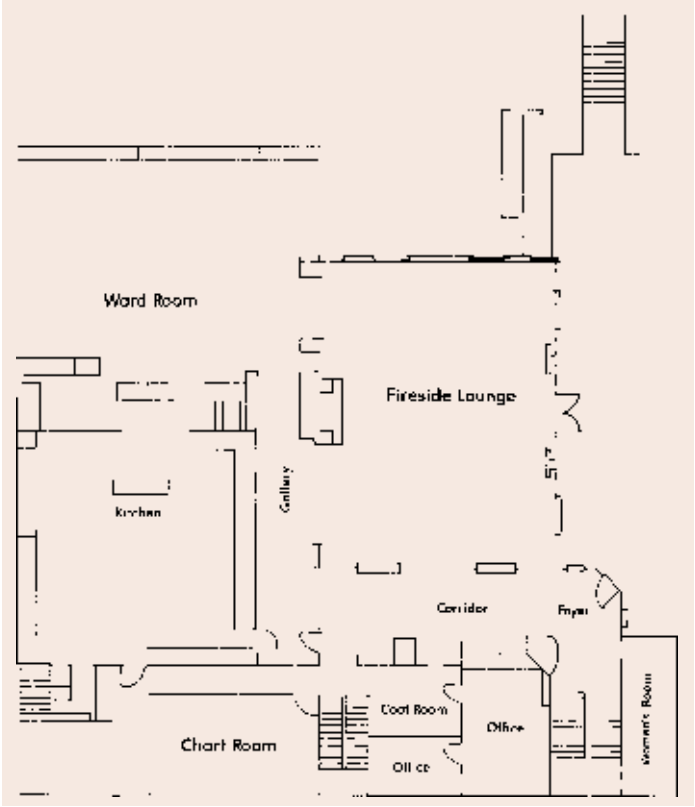
Our fine dining room is available on selected dates for private functions. With windows facing the south and west, the Ward Room offers a panoramic view of our docks and Portage Bay. A teak bar will serve your guests in style and the captain's chairs lend elegance and comfort to your event. It is ideal for baby showers, charity luncheons and formal dinners in this classic Seattle venue.



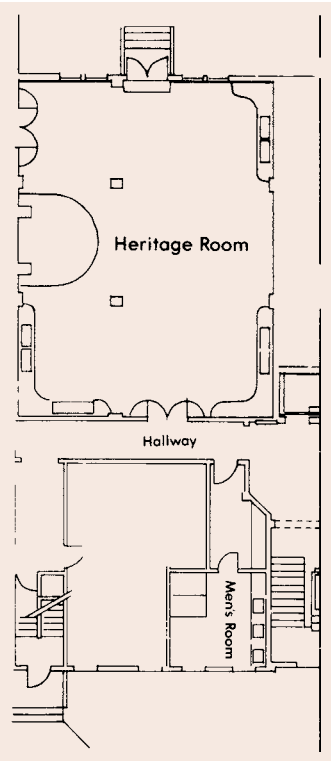
Lawn/Rose Garden

Our carefully manicured lawn and rose garden is available during the warmer seasons. Overlooking our docks and Portage Bay, this magnificent lawn is perfect for large gatherings. Beautifully dressed tents are available for our unpredictable Seattle weather.

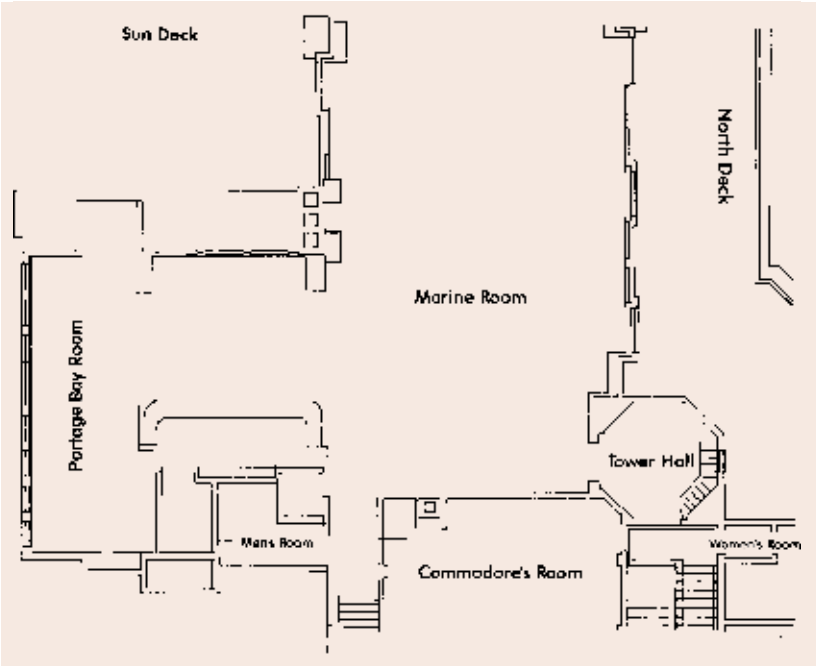
floorplans



- Main floor
- Fireside Lounge
 - Ward Room
 - access to lawn through side staircase
 - view of marina



- Lower floor
- Heritage Room
 - access to lawn through patio door



- Upper floor
- Commodore's Room
 - access to sun deck through Marine Room

room capacities

	Banquet Tables	Cocktail Reception	U-Shape	One Table	Theater Style	Dimensions
Fireside Lounge	150	150	55	60	150	34'x44'
Ward Room	120	125	60	60	150	36'x45'
Ward/Fireside	270	275	--	--	250	3028 sq ft
Chart Room	--	--	--	10	--	11'x14'
Commodore's Room	32	40	--	28	40	20'x25'
Heritage Room	90	125	55	45	75	43'x30'



